

DriFlow™

by Downhole Chemical Solutions

*The most reliable & advanced **stimulation**
chemical delivery system on the market*





Outline of Topics

The Team

- *DCS's team responsible for DriFlow Performance*

The Equipment

- *DriFlow 2.X System vs. DriFlow 3.X System*

The Data

- *Custom Analytics & Dashboards*

The Tools & Features

- *Additional Value Adding Features*



DriFlow Support Team

Internal support structure: Remote Operations Center (ROC)



DCS's Remote Ops Center (ROC)...

- ✓ Is highly trained,
- ✓ Has ample field experience,
- ✓ Manages jobs remotely 24/7.

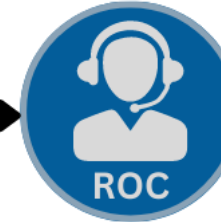
Major Benefits

- ✓ Quicker issue resolution
- ✓ Single POC for field team
- ✓ Increased ops. efficiency
- ✓ More reliable inventory management

ROC Function 1:

Logistics & Inventory Management

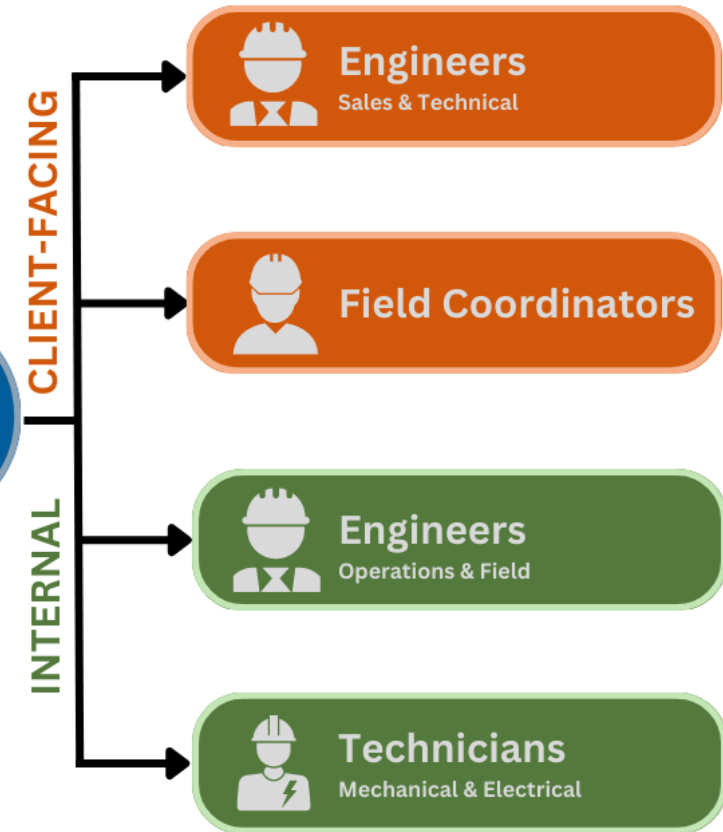
- product ordering & dispatch
- asset maintenance
- back up equipment dispatch



ROC Function 2:

Expert Operational Support

- 1st POC for all DCS field personnel
- remote asset control & diagnostics
- High resolution analytics & alarming

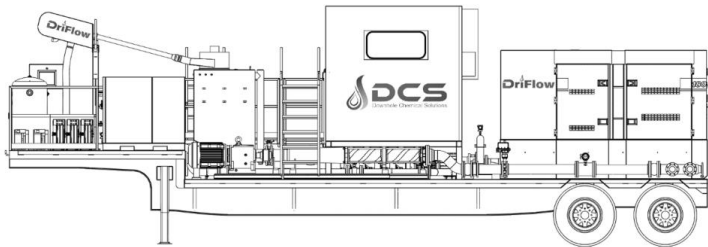




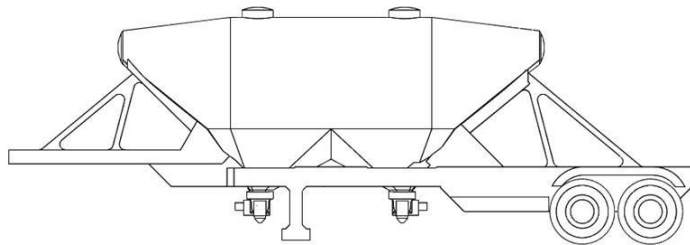
DriFlow Support Team

Client-facing support structure

DCS's **on-site DriFlow Operator** operates equipment and maintains inventory levels



DriFlow™ Unit



Pneumatic Trailer

DriFlow Operator

- Primary POC to client field personnel
- Operates and maintains DCS equipment.
- On location 24/7



Field Coordinator

- Secondary POC to client field personnel
- Ensure operators are equipped with the necessary tools to be successful



**FIELD
BASED**

Sales Engineer

- Conduit between DriFlow ops & the client at the field & office level
- Ample field experience to provide technical support & communicate operational performance



Director of Client Support



- Conduit between DCS sales & the client at the field & office level
- Provides client support with regards to product chemistry, performance and pricing.

**OFFICE
BASED**

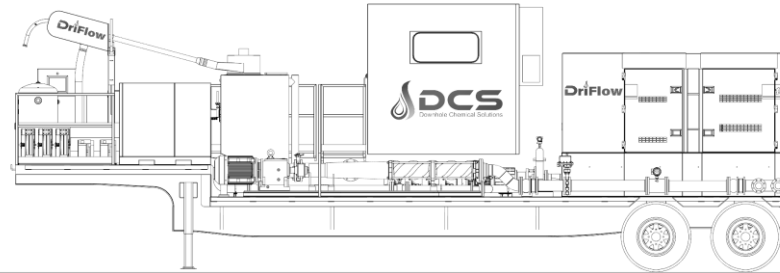
CLIENT



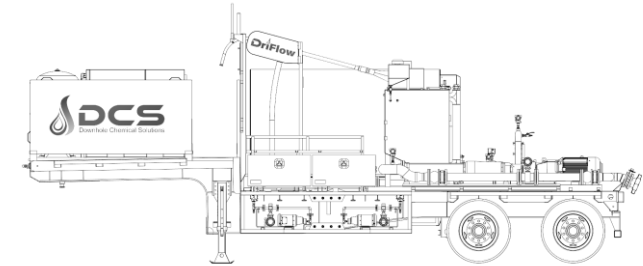
DriFlow Equipment

Units 2.X vs. 3.X – Comparison

Series 2.X



Series 3.X



Spec...

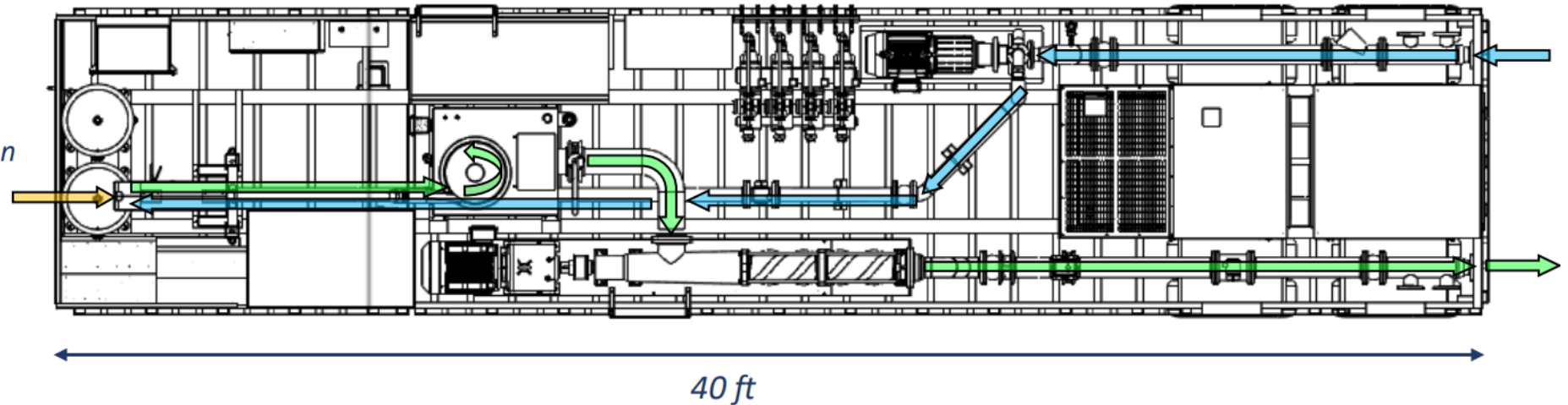
Flow Rate	8 BPM	3.75 BPM
On-board Buffer Volume	9 BBL	4.5 BBL
Max Loading @ 80 BPM	18 PPT (60 lb/min)	12 PPT (40 lb/min)
Power Requirement	Integrated 180 kVA Generator	Detached 125 kVA generator
E-Fleet Capable?	YES	YES
Footprint	40' (l) x 8.5' (w) – 45,000 lb	28' (l) x 8.5' (w) – 25,000 lb
Operator Control	Trailer-mounted Cabin	Operation from DCS truck cab



DriFlow Equipment

Units 2.X vs. 3.X – Process Design

- Water
- Dry FR Powder
- Hydrated FR Solution

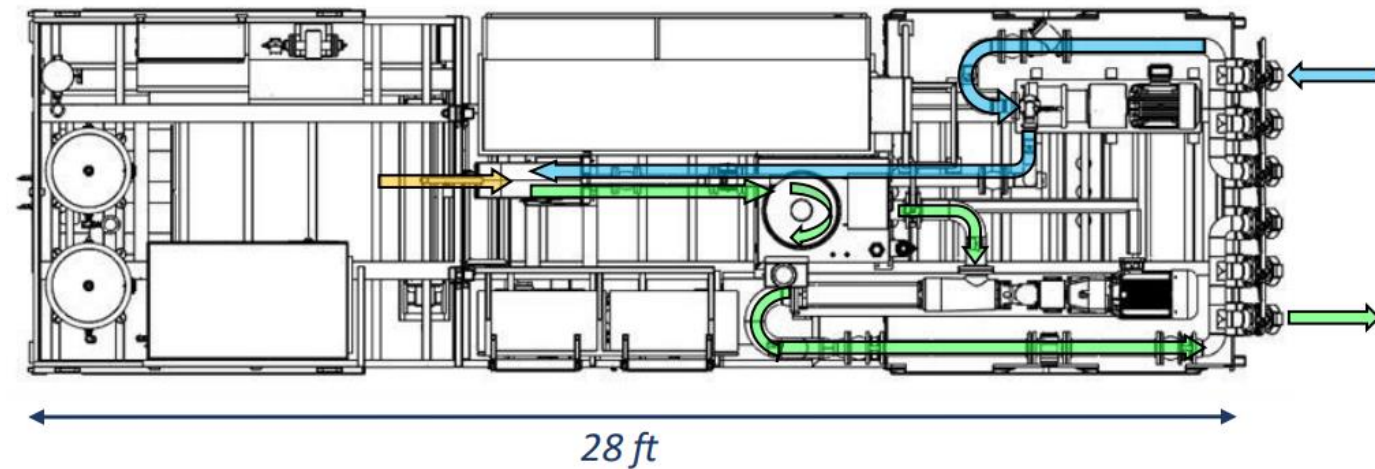


Different form factor, same exact process

3.X units have...

1. A smaller footprint
2. Lower power consumption
3. Lower flow rate

...without sacrificing performance!





DriFlow Services

DCS-nSight - Customer facing data analysis service



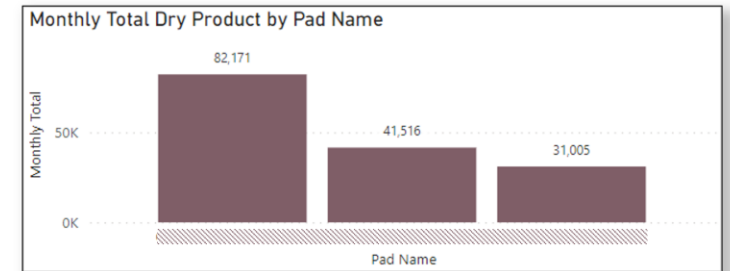
DCS-nSight.com

Custom Analytics Dashboards

- ✓ Stage-level analytics of jobs
- ✓ Deep insight to by-stage performance & invoicing
- ✓ Integration of **Machine-Learning** tools for Chemical Usage Prediction

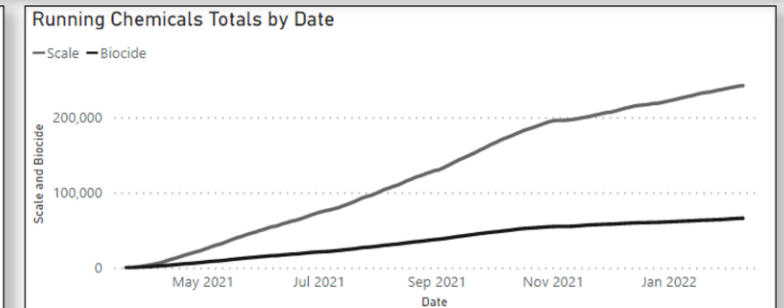
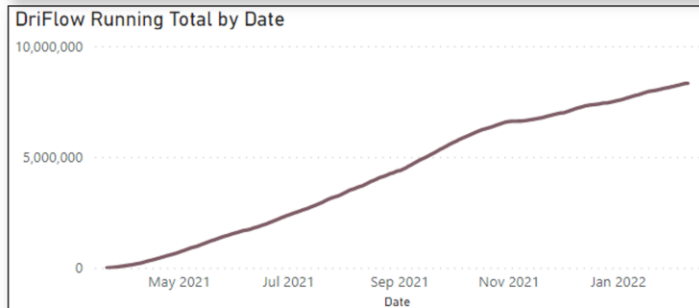


8,322,460	154,693
Total Dry Product to Date	MTD (lb)
4907	792,246
Total Stages Completed	QTD (lb)
91	792,246
Total Wells Completed	YTD (lb)



RealTime View

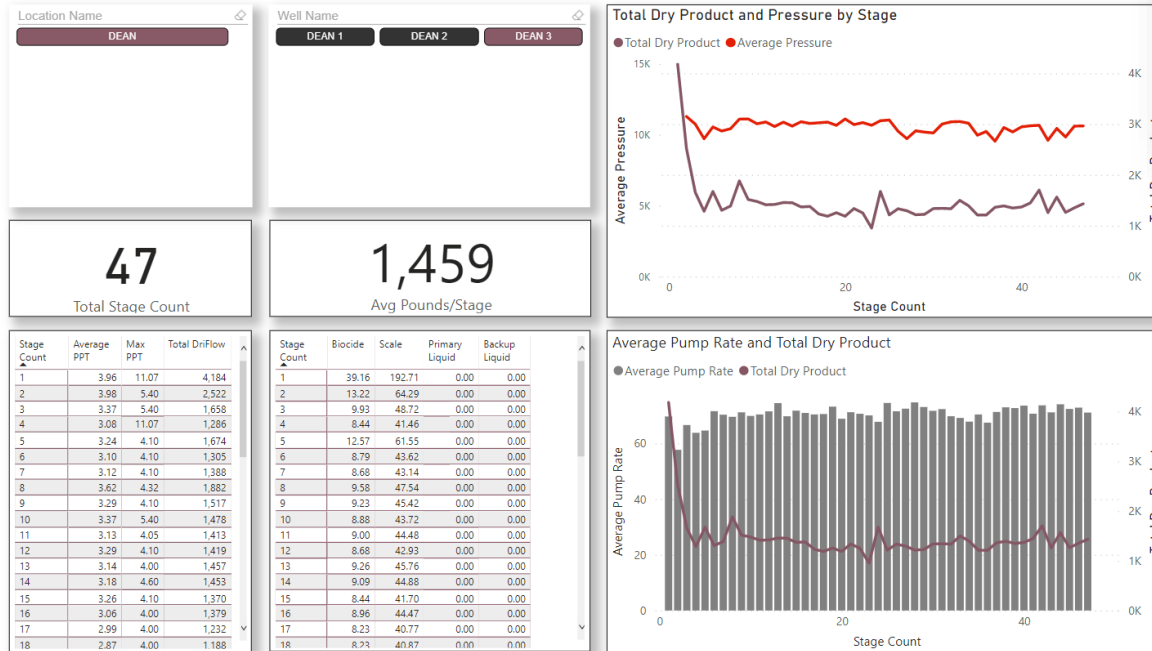
DriFlow Unit #	Pad Name	Current Well	Current Stage	Total Stage Count	Current PPT	In Stage?	Remaining Weight	Local Time
DriFlow Unit 2.15			7	14	0.00	✗	10,903.99	2/9/2022 12:36:15 F
DriFlow Unit 2.16			71	71	0.00	✗	35,562.20	2/9/2022 2:52:15 A
DriFlow Unit 3.0			1	1	0.00	✗	41,100.00	2/9/2022 12:36:15 F
DriFlow Unit 3.3			19	19	0.00	✗	17,092.59	2/9/2022 12:36:15 F





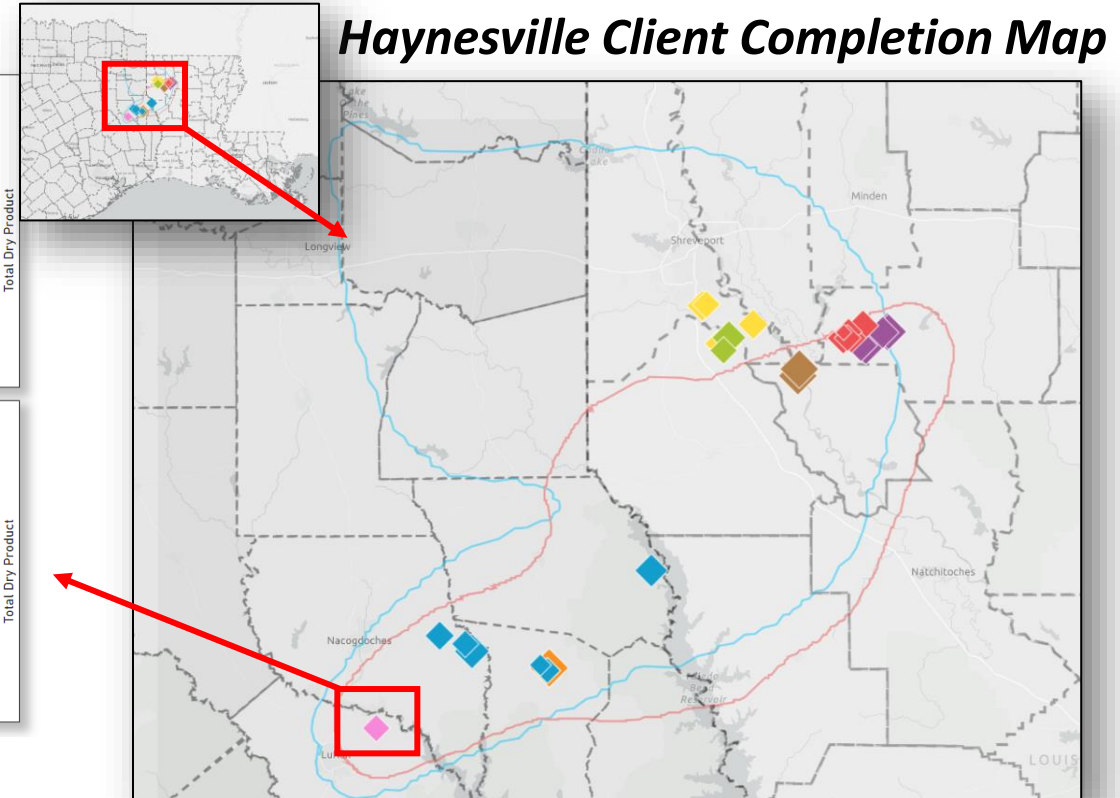
DriFlow Services

DCS-nSight - Customer facing data analysis service!



Performance analysis based on:

- ✓ Geographical location
- ✓ Well treating pressure & Rate



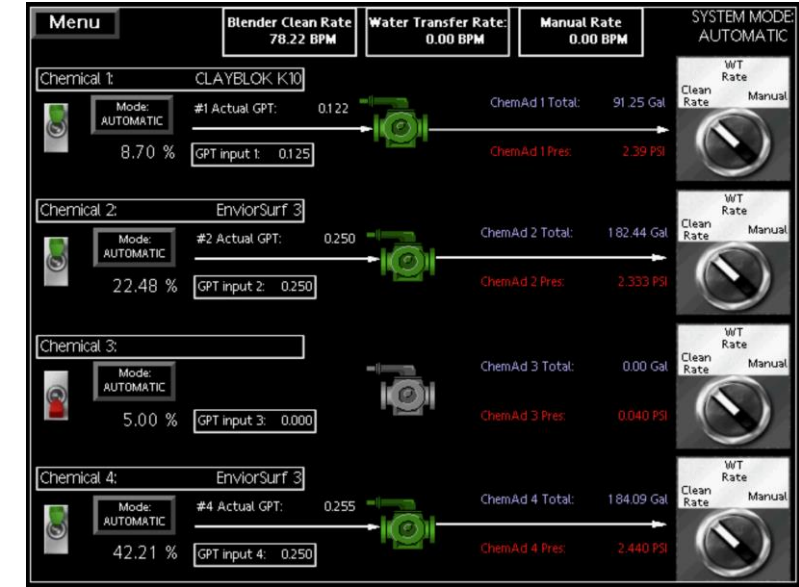
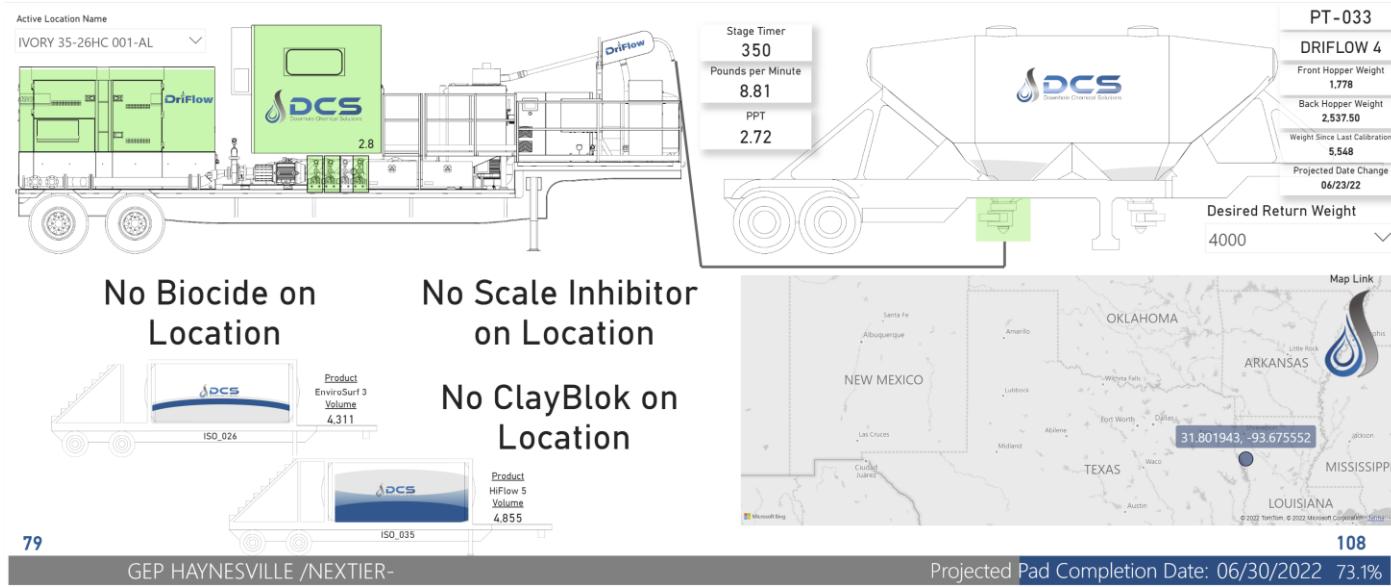
Automated ARC-GIS plotting

- ✓ Average FR Loading
- ✓ Average treating pressure
- ✓ Average down-hole rate



Other Equipment Features & Services

On-Board services



Water Monitoring Capabilities

- ✓ Real-time water quality:
 - ✓ TDS (ppm), pH, ORP
- ✓ On-demand water quality:
 - ✓ Hardness (most impactful for FR)
 - ✓ Free Residual Chlorine (FRC)

On-board chem-ad pumps

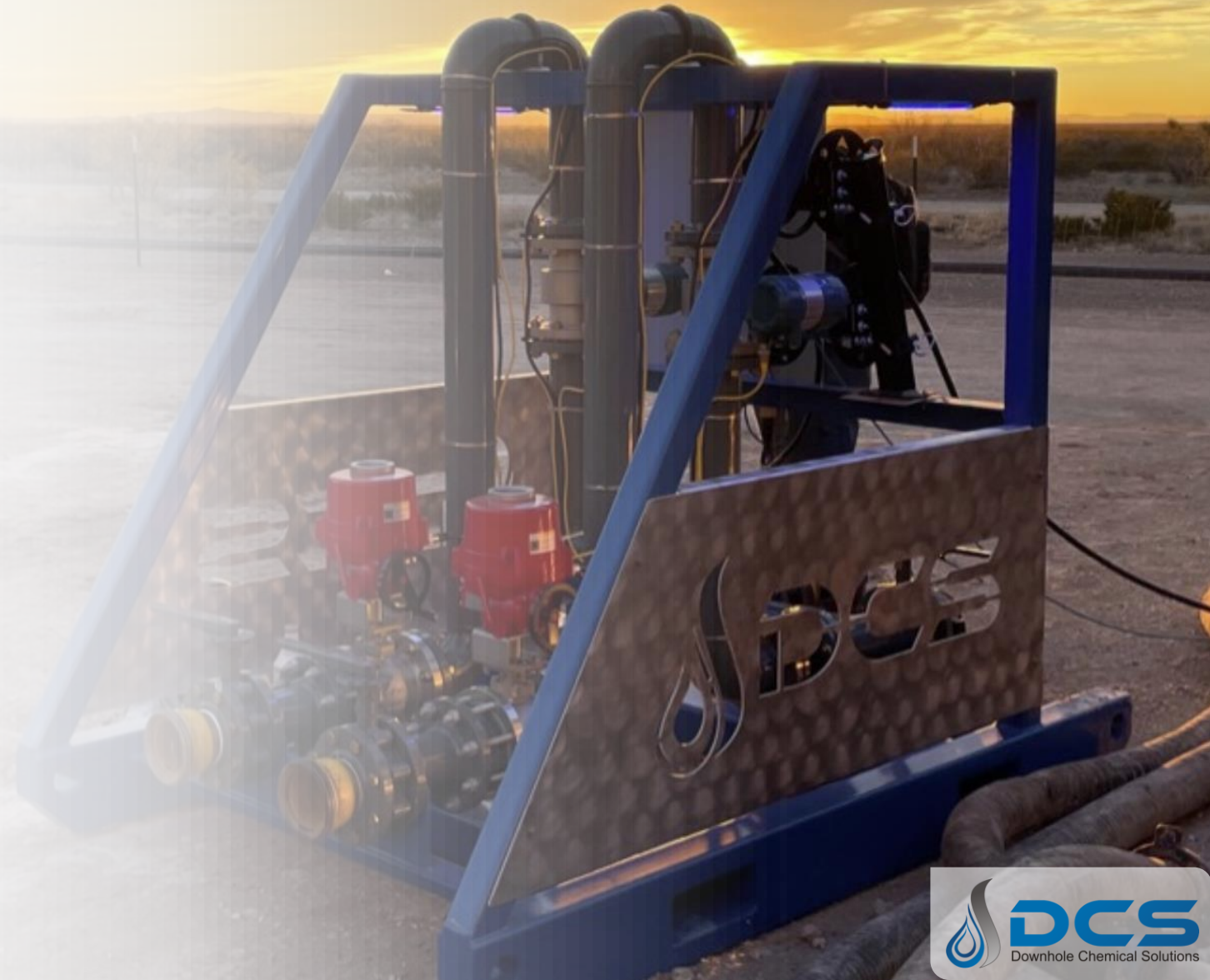
- ✓ Designed for concentrated chemistries
- ✓ 0.02 GPT → 1.25 GPT @ 80 BPM
- ✓ Avoid Liquid FR

DriFlow™

+ Multi-Stim™ Technology

The latest in simul-frac chemical technology

August 18, 2021





Outline of Topics

How it Works

- *Basic Operating Principle*



Why it works

- *What are the benefits to using Multi-Stim™?*



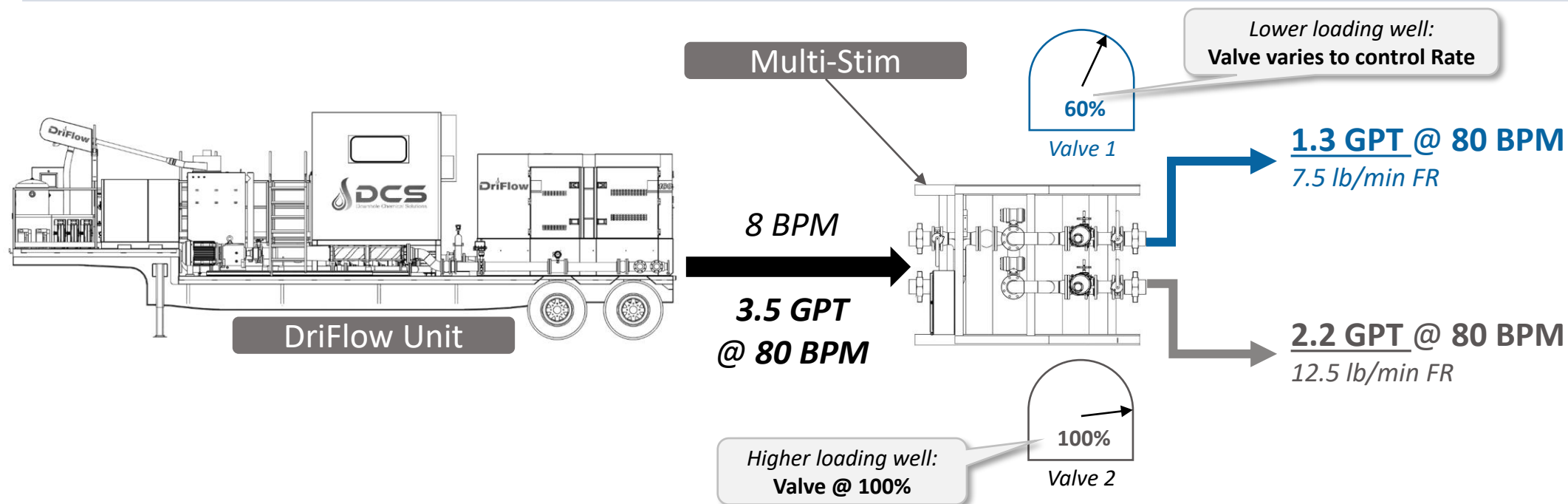
By the Numbers...

- *Past performance IS an indication of future outcomes*



How Does it Work?

Basic Process Flow



Step 1:
 $PPT_1 + PPT_{2+} =$
Total PPT

Step 2:
Mix Total FR on
DriFlow Unit

Step 3:
Auto-Valves & Flow-
meters divide the
flow

Step 4:
Each well gets the
right amount of FR

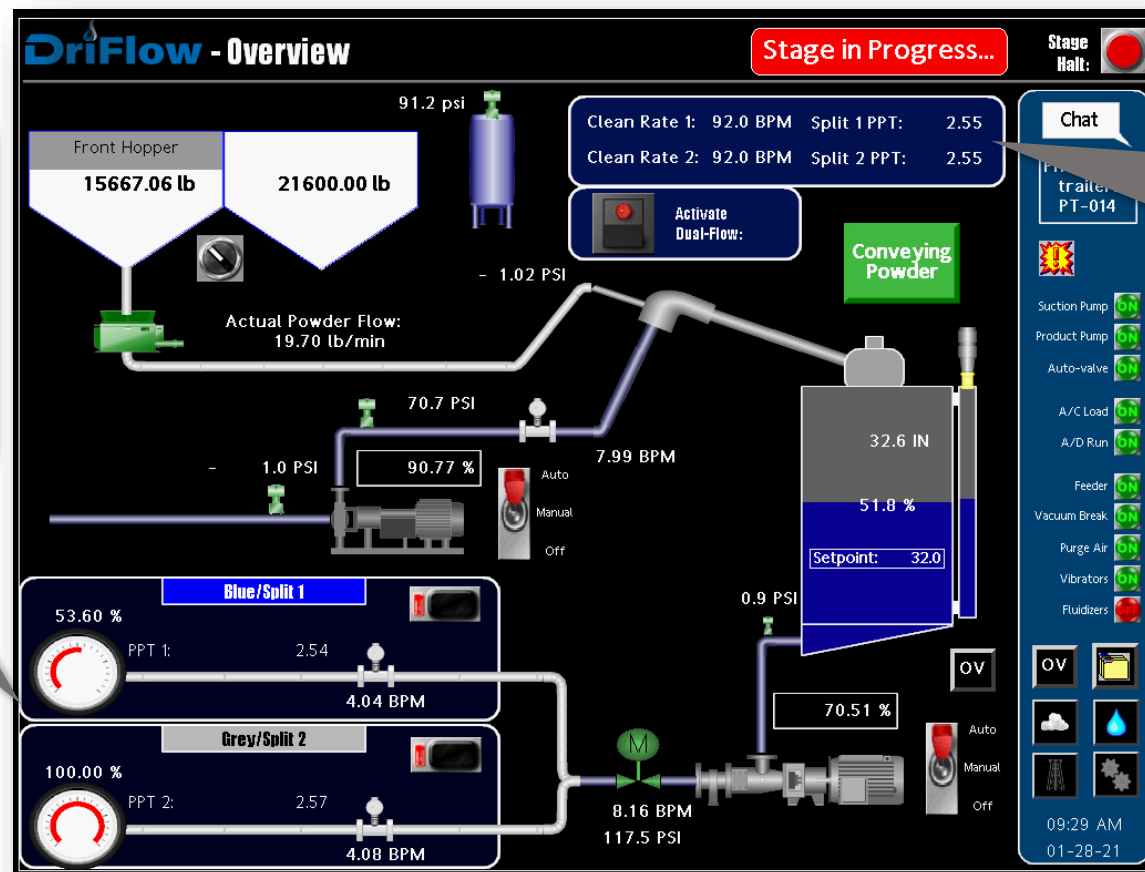


How Does it Work?

Controls & Communication

Independent FR Rate

Control System
adjusts valves
automatically to
deliver



Inputs for:

Well 1: 1.5 GPT @ 92 BPM
Well 2: 1.5 GPT @ 92 BPM

Communication with Datavan

- Multi-Stim™...
- Integrate with all common frac platforms

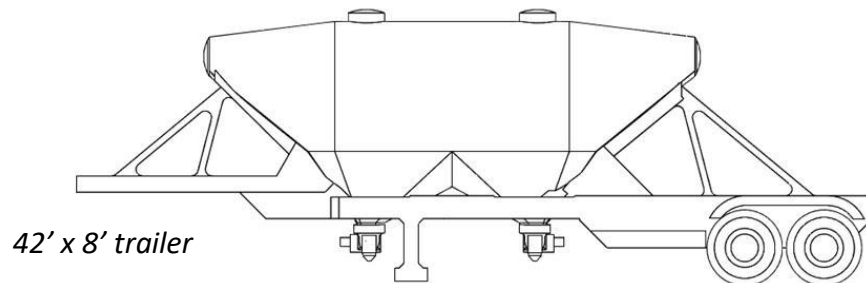
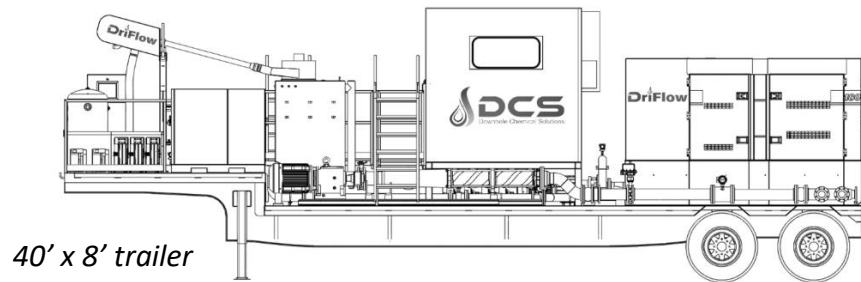


What are the benefits?

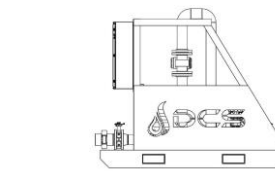
Stimulation of multiple wells with 1 DriFlow Unit

- *Smaller Footprint*
- *Fewer points of failure = better run-time efficiency*

Replace: (1) DriFlow Unit & (1) Pneumatic Trailer



...with: (1) Multi-Stim Unit

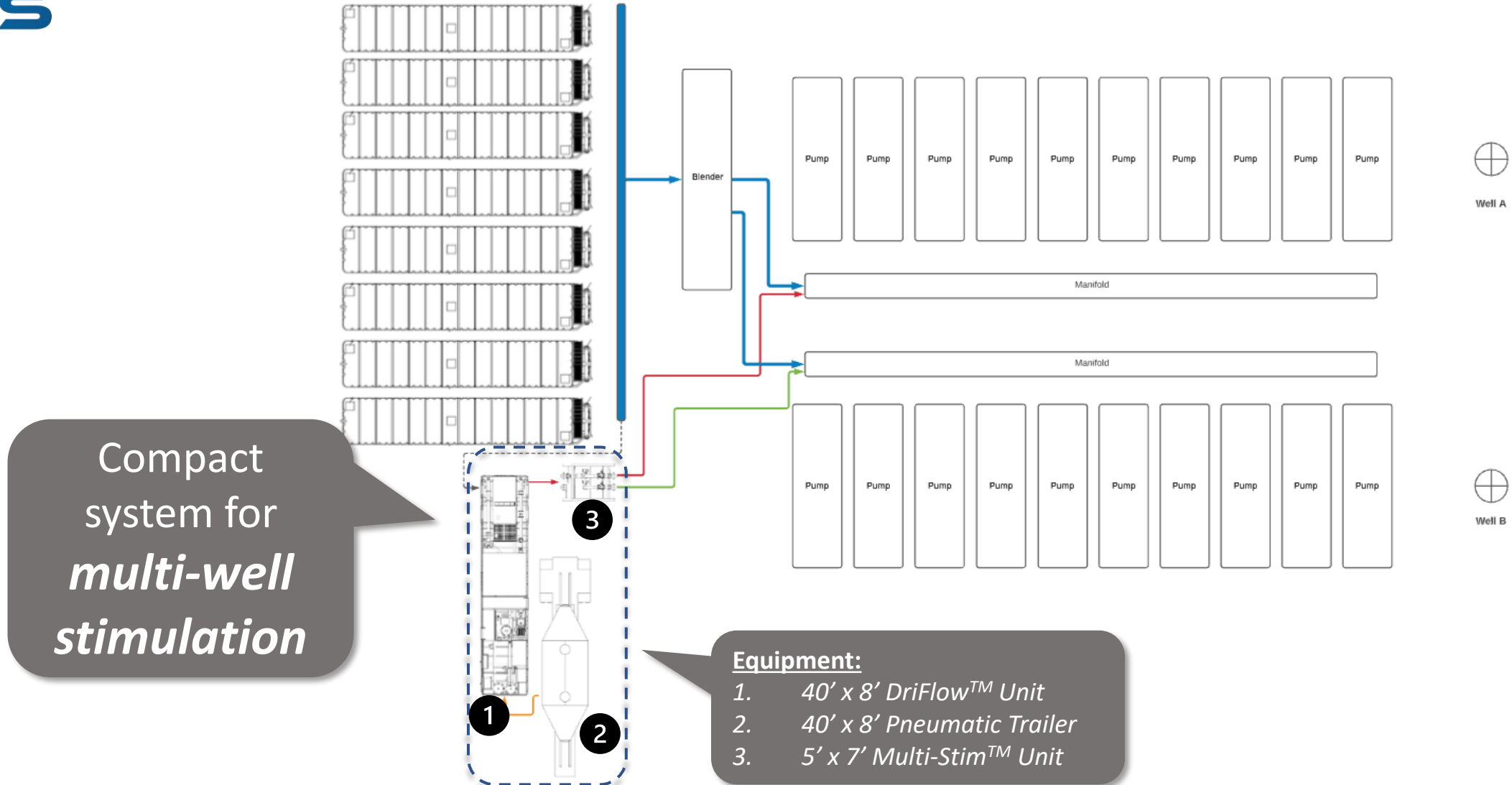


5' x 7' skid



How Does it Work?

Example Pad Layout





Past Performance...

Indication of future outcome!



Data Dashboard

Summary Information

2,667,229

Dry Product Used (lb)

2828

Stages Completed

69

Wells Completed

Historical Information

347,938

YTD (lb)

347,938

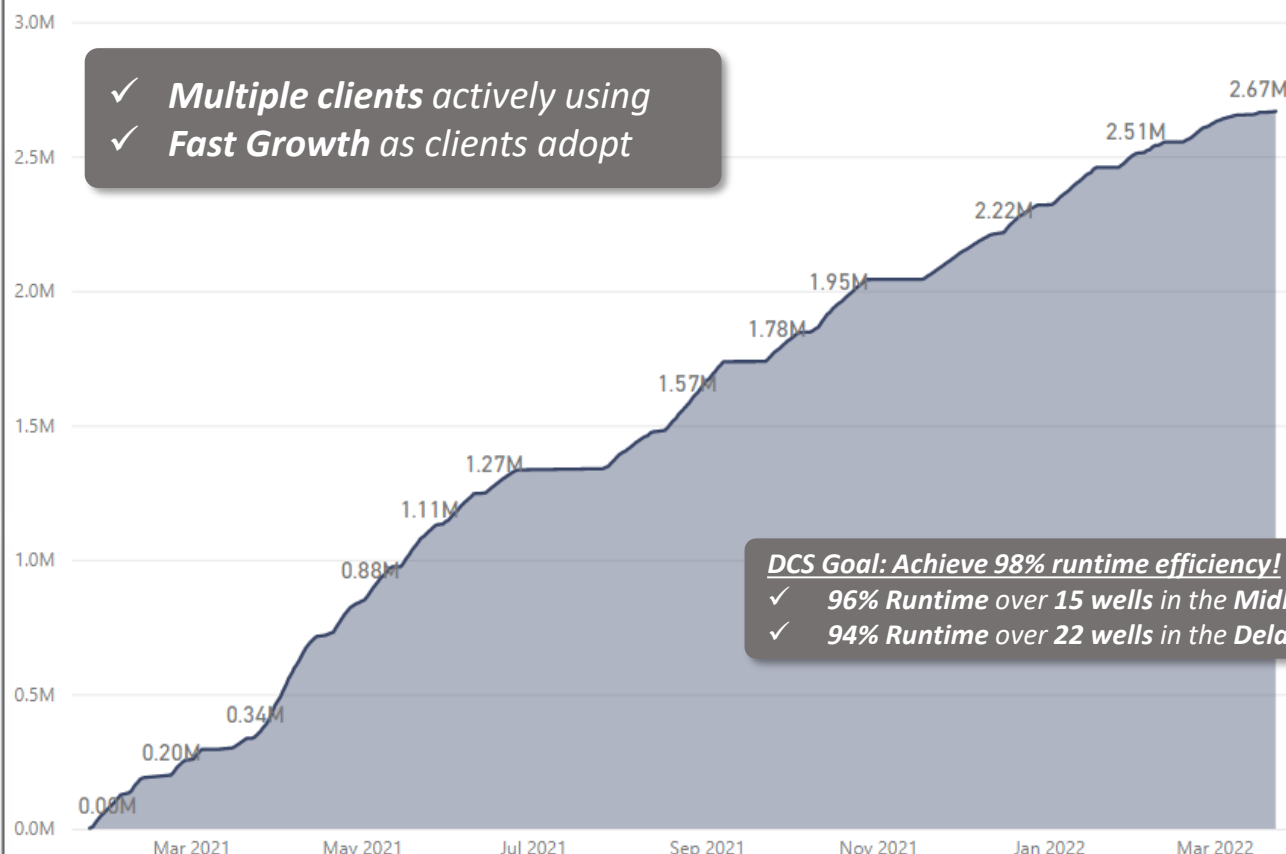
QTD (lb)

47,784

MTD (lb)

- ✓ 2.7 Million pounds
- ✓ 2,800 stages
- ✓ 67 wells

Historic Powder Usage



DCS Goal: Achieve 98% runtime efficiency!

- ✓ 96% Runtime over 15 wells in the Midland basin
- ✓ 94% Runtime over 22 wells in the Delaware Basin

One Cowboys Way Suite 572
Frisco, TX 75034
469-466-1100
info@stimchems.com
www.stimchems.com

